


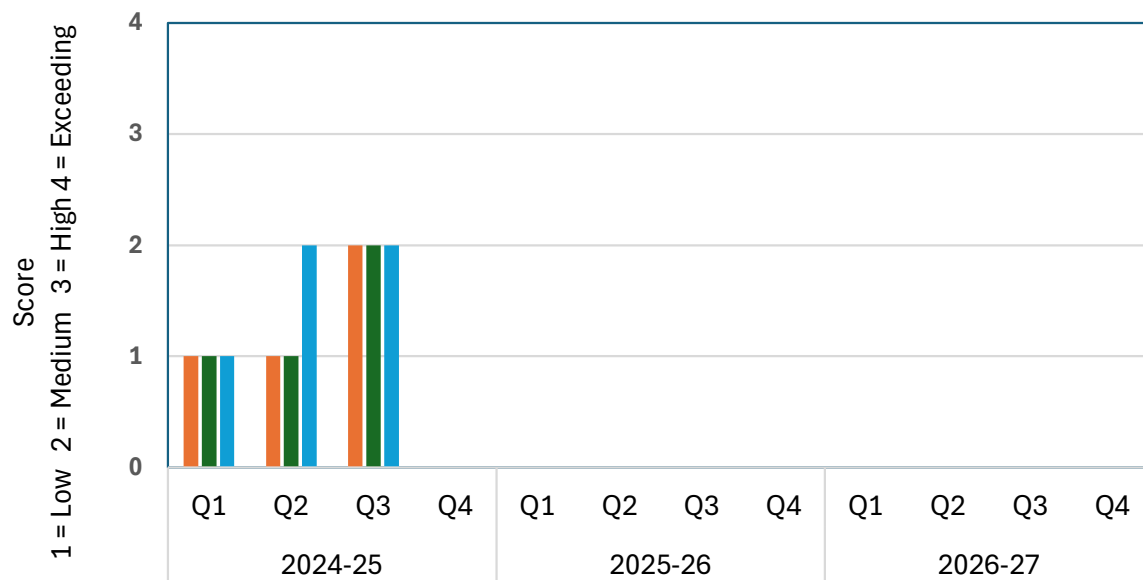
Strategic Priority 1 - Boosting Jobs and Economic Prosperity		Aims of the Services Committee	What does success look like?	Actions	Live Score (1 = Low 2 = Medium 3 = High 4 = Exceeding)	2024-25				2025-26				2026-27			
						Q1	Q2	Q3	Q4	Q1	Q2	Q3	Q4	Q1	Q2	Q3	Q4
	To ensure Saltash benefits from higher income, reduced poverty, improved facilities and quality of life. Promote Saltash as a vibrant and welcoming visitor destination.	Continue to work with key stakeholders in the devolution of asset process with an increase of Town Council staffing levels, if required;	To work in partnership with Cornwall Council to improve the Waterside area To devolve Victoria Gardens and Maurice Huggins Room to the Town Council Secure Service Level Agreements with key stakeholders to make the town more attractive and welcoming, whilst continuing to build and maintain positive working relationships	Start the devolution process of Victoria Gardens and Maurice Huggins Room Sign Leases with Cornwall Council Sign Service Level Agreements with outside organisations and undertake additional duties required Personnel Committee to consider additional staffing resources as instructed by the Town Clerk as required Partnership working with Cornwall Council by email authorisation to undertake weed and vegetation management on Jubilee and Waterside Greens and the pathway inbetween both sites Positive early engagement with Network Rail (land owners) of the Waterside toilets and 8 sheds within the same area, to progress a 99-year Lease to the Town Council to improve the buildings/services to the community Due to the closure of Saltash Adult Ed, partnership working with CC took place to try and save the service, by attendance at meetings, writing letters, liaising with Cornwall Cllrs and stakeholders to retain the training provider in the town (STC recognises this action also meets strategic priority 2) Approved planting of a Quercus Petraea Oak at Victoria Gardens working in partnership with Cornwall Council (STC recognises this action also meets strategic priority 5)	2	1	1	2									
		Improve facilities and quality of life by continuing to maintain our public conveniences and to invest in accessible public conveniences	All Town Council public conveniences to be accessible Improvements to all Town Council public conveniences Dementia friendly Saltash Neighbourhood Development Plan	Property Maintenance Sub Committee to investigate public convenience improvements and associated cost to form part of the five-year maintenance plan Property permissions to be ascertained if required Refer to the Saltash Neighbourhood Development Plan for guidance on the need for public conveniences Construction designs to be investigated by the Town Council Building Surveyor Funding to be explored to support all or some of the associated cost Public consultations to be held to seek evidence of need in the community To install dementia friendly signage to all Town Council public conveniences Partnership working to support PL12 community Dementia training by providing free facilities and sale of tickets via Eventbrite Reinvesting in 2025/26 public conveniences cleaning contract to keep the service available and to a high standard Engagement with Network Rail for a 99-Year Lease to assist the Town Council towards improved toilets including fully accessible and baby changing facilities Improved public conveniences at the Waterside - painting, new sink/dryer, door locks, cleaning, and artwork to brighten the space Re-opening of Longstone Park toilets during the Winter months in line with the rest of the Town Council public conveniences	2	1	1	2									

[illegible]


Business Plan

Strategic Priority 1 - Boosting Jobs and Economic Prosperity

Aims of the Services Committee



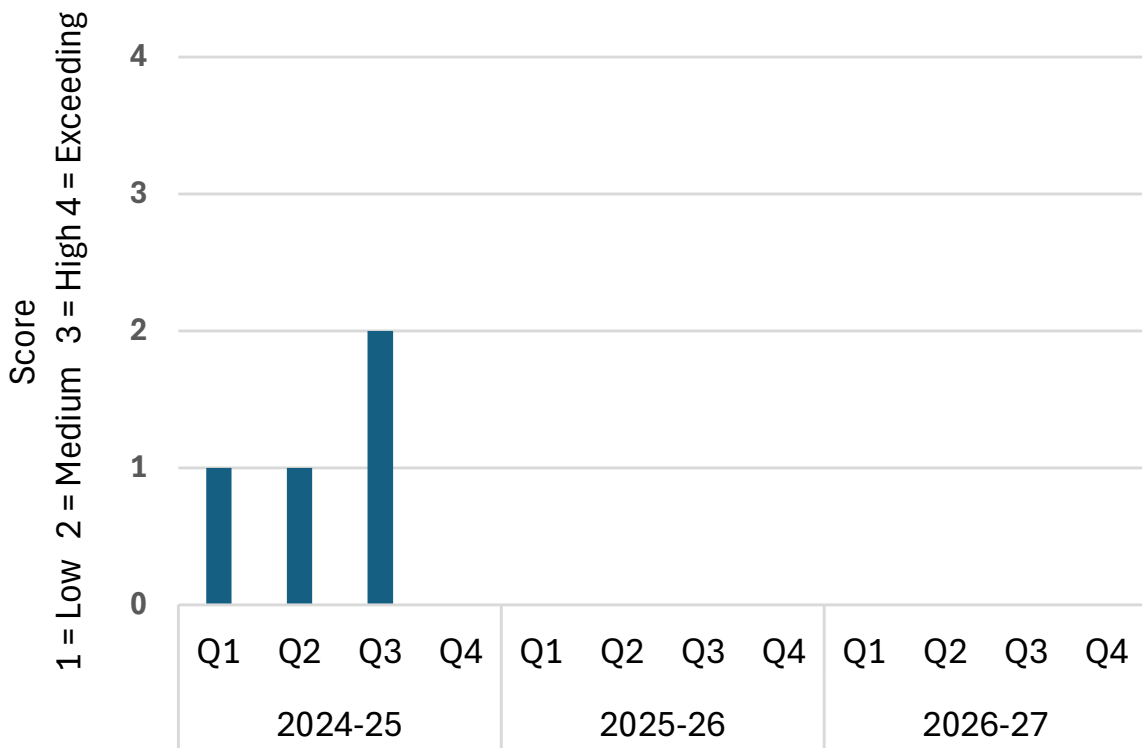
- Continue to work with key stakeholders in the devolution of asset process with an increase of Town Council staffing levels, if required;
- Improve facilities and quality of life by continuing to maintain our public conveniences and to invest in accessible public conveniences
- Continue to promote Saltash as a vibrant and welcoming visitor destination by reinvesting and working in partnership with key stakeholders in key areas such as Victoria Gardens, the Town Centre, and future Waterside projects.

Strategic Priority 2 - Health and Wellbeing		Aims of the Services Committee	What does success look like?	Actions	Live Score (1 = Low 2 = Medium 3 = High 4 = Exceeding)	2024-25				2025-26				2026-27			
						Q1	Q2	Q3	Q4	Q1	Q2	Q3	Q4	Q1	Q2	Q3	Q4
	To support the Saltash Healthcare Action Group in improving our local NHS provision. Support improvement to mental health, fitness facilities, educational wellbeing of children and opportunities to access a high level of quality learning for young people.	Provide, maintain and support mental health and wellbeing with street furniture and green public spaces	Improved public green spaces for everyone to use	Refer to the Saltash Neighbourhood Development Plan for guidance on improving public realm	2	1	1	2									
			Maintain Town Council owned street furniture to a high standard	Support Saltash Town Team with additional community open spaces inclusive of parklets and markets													
			Provide where required additional street furniture in consultation with the public as evidence of need	Carry out regular maintenance checks of all Town Council owned street furniture, ensuring it is kept to a high standard and is included in the asset register													
			Keep the town looking it's best at all times	Install hanging baskets and expand further on the Waterside, Lower Fore Street, Victoria Gardens and Isambard House													
			Saltash Neighbourhood Development Plan	Install mental health organisation plaques to Town Council benches to help support our residents and visitors													
				Promote mental health and wellbeing via the Town Council website													
				Partnership working with SEA assisting with maintenance at Elwell Woods within existing service delivery resources													
				Improved Allotment Policy providing further clarification/expectations for users													
				Winter planting to keep the town looking cheerful/attractive/welcoming													
				Improved allotment access by clearance of pathways, new fencing and gate													

Business Plan

Strategic Priority 2 - Health and Wellbeing

Aims of the Services Committee



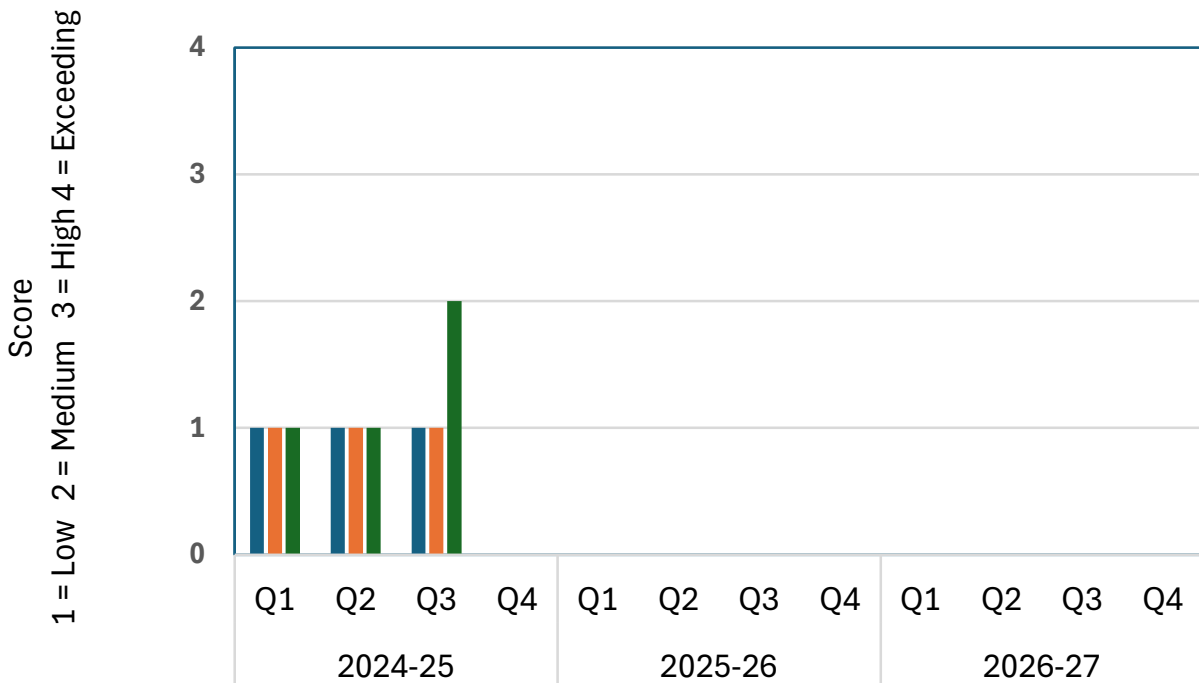
Provide, maintain and support mental health and wellbeing with street furniture and green public spaces

Strategic Priority 3 - Housing		Aims of the Services Committee
	To ensure Saltash has a balanced range of high quality and affordable housing by working in partnership with Cornwall Council	The Services Committee recognised strategic priority 3 - Housing did not fit within the remit (Terms of Reference) of the committee

Business Plan

Strategic Priority 4 - Travel and Transport

Aims of the Services Committee

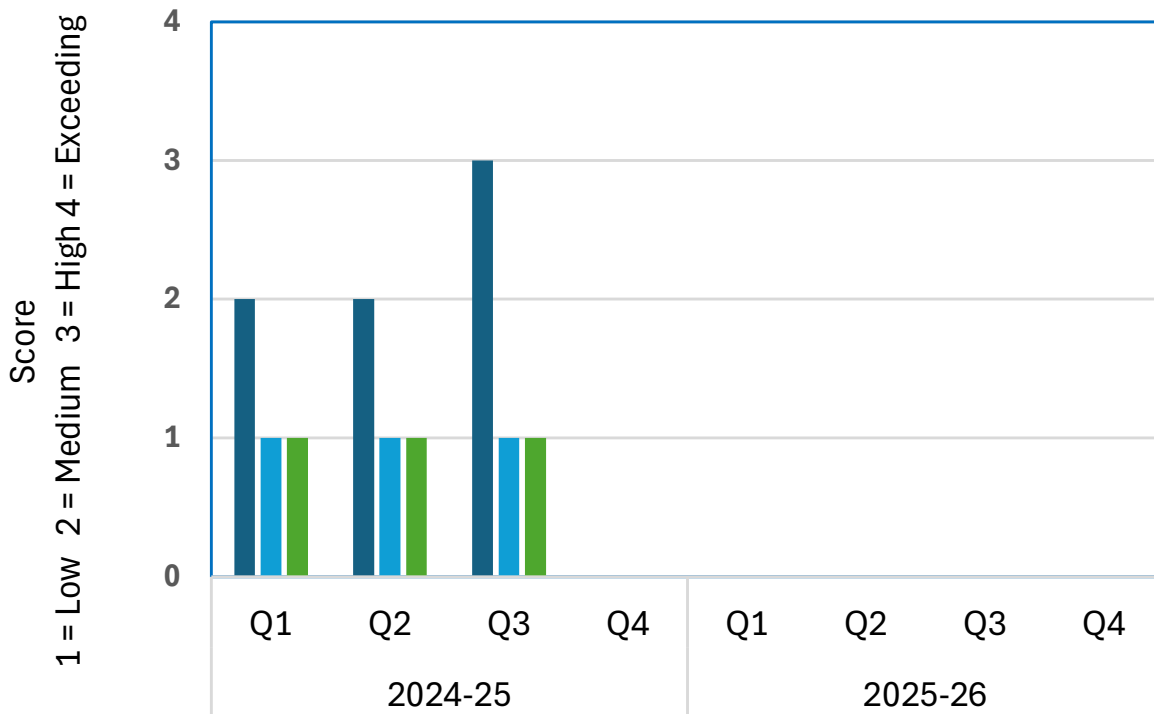


- Continue to investigate and implement where possible a sustainable Town Council fleet of vehicles
- Promote and encourage walking and cycling routes in the community
- Support access and improved connectivity from Saltash to Plymouth and neighbouring Towns and Parishes

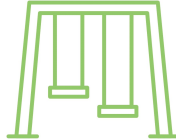
Business Plan

Strategic Priority 5 - Climate Emergency

Aims of the Services Committee



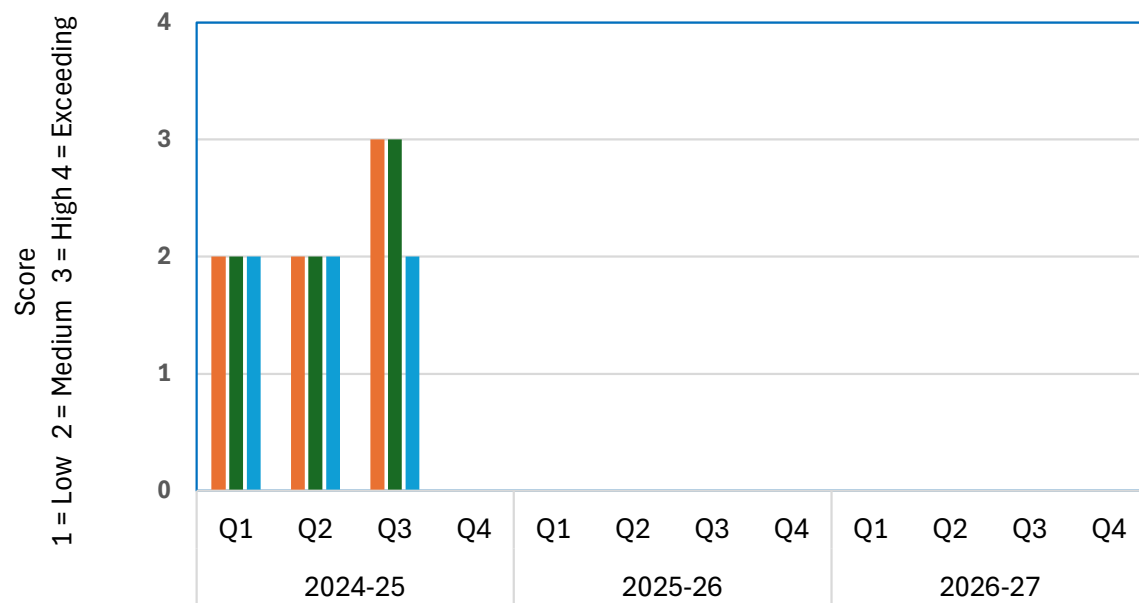
- To continue to implement sustainable grounds maintenance methods and good environmental practices.
- Support community initiatives for tree planting and wildflower meadows
- Continue to support and partake in the Plastic Free Community pledge

Strategic Priority 6 - Recreation and Leisure		Aims of the Services Committee	What does success look like?	Actions	Live Score (1 = Low 2 = Medium 3 = High 4 = Exceeding)	2024-25				2025-26				2026-27			
						Q1	Q2	Q3	Q4	Q1	Q2	Q3	Q4	Q1	Q2	Q3	Q4
	To continue to provide, improve, and support in Saltash, play parks, open green spaces, library service, cultural activity, leisure and support facilities, and to acknowledge our unique position on the Tamar and Lynher Rivers	Maintain, promote and reinvest in Town Council play parks and recreational areas	Investment and Development High-Quality Maintenance Improved open green spaces Promoting improvement works Consultation Funding awarded to provide new play equipment / improvement to community open spaces Saltash Neighbourhood Development Plan	Refer to the Saltash Neighbourhood Developmet Plan for guidance to meet the growing demand for recreation areas Maintain and invest in new play equipment for Town Council owned play parks Review other play parks in Saltash and consider whether investment is required to provide a good standard of play working in partnership with key stakeholders Consult with the public that live in the area specific to the work needed Seek funding opportunities to relieve pressure from the Precept Service Delivery to carry out high quality maintenance / safety checks by being ROSPA qualified Grounds maintenance to be undertaken on a regluar basis making open green spaces attractive Regular maintenance checks to be carried out ensuring all play equipment is to the highest of standards Play park provision improved at Grassmere Way and Honeysuckle Close via CIL third round funding and Town Council contribution Repalcement gate for Grassmere Way play park Working in partnership with SEA to maintain and promote Ellwell Woods Fairmead Allotments, replaced old fencing and re-sited the entrance gate for improved access, added an additional water tap	3	2	2	3									
		Provide, maintain and support mental health and wellbeing with street furniture and green public spaces	Partake in the Chatty Plaque scheme Ensure open spaces are kept to a high standard for all to enjoy	Purchase six Happy to Chat plaques to install on Town Council benches to act as a talking point and encourage those who see them to reach out Service Delivery to undertake regular maintenance to Town Council open spaces to ensure they are suitable and attractive for all to enjoy Mental Health and Wellbeing Town Council website page actively supporting the 'Happy to Chat Plaque' Scheme The Mayor official opened Grassmere Way and Honeysuckle Close improved play areas Partnership working with Cornwall Council to provide maintained pathways and review flood defences	3	2	2	3									

[illegible]

Business Plan

Strategic Priority 6 - Recreation and Leisure Aims of the Services Committee



- Maintain, promote and reinvest in Town Council play parks and recreational areas
- Provide, maintain and support mental health and wellbeing with street furniture and green public spaces
- Continue to provide pontoon facilities allowing access to the river and support better connectivity to neighbouring areas